

G-Premio BOND



Introducing
a **premium**
bonding experience

./GC./

The world's most clinically successful adhesive is now even better! Introducing G-Premio BOND.

G-BOND has proven to be the world's most clinically successful adhesive with an annual failure rate of just 1.3 restorations per 100 restorations placed.

This clinical success clearly endorses G-BOND's formulation – designed for **durability through chemical bonding**, using a more hydrophobic, **non-HEMA containing** self-adhesive resin.

New G-Premio BOND is a no compromise, one-component, light-cured universal adhesive that delivers a bonding experience like no other. It offers outstanding performance in all etching modes and all clinical situations.

TOP 10 BONDING AGENTS

	Adhesive (manufacturer)	Annual Failure Rate	Number of clinical trials
1	G-BOND (GC)	1.3	7
2	Adper Scotchbond 1 XT (3M ESPE) [#]	1.4	5
3	Optibond FL (Kerr) [#]	1.8	6
4	Clearfil SE Bond (Kuraray Noritake) [#]	2.2	12
5	Clearfil Liner Bond (Kuraray Noritake) [#]	2.2	3
6	Adper Prompt L-Pop (3M ESPE) [#]	2.3	7
7	Clearfil S3 Bond (Kuraray Noritake) [#]	2.6	7
8	Adper Easy Bond (3M ESPE) [#]	3.2	3
9	XPBond (Dentsply DeTrey) [#]	3.5	5
10	Adhese (Ivoclar Vivadent) [#]	3.6	3

Ranking is based on average annual failure rate (AFR) reported from a minimum of 3 independent clinical trials** for adhesive performance in non carious cervical lesions (NCCL).

[#] Not trademarks of GC Corporation; ^{**} Clinical effectiveness of contemporary adhesives for the restoration of non-carious cervical lesions. A systematic review. M. Peumans, J. De Munck, A. Mine, B. Van Meerbeek. Dental Materials 30 (2014) 1089-1103



Enjoy a premium bonding experience like no other!

Universal etching modes

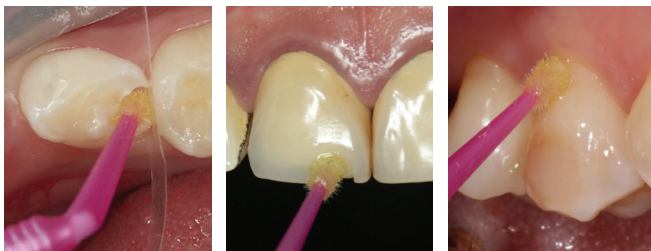


Self-etch

Selective-etch

Total-etch

Universal indications



Direct bonding*

Repair cases*

Hypersensitivity treatment**

* Dr S. Koide, Japan ** Dr E. Sauji, Japan

Universal acclaim

“ Brilliant bottle design. ”

“ Fast and simple, no rubbing or complex application procedures. ”

“ Chemically bonds within the first few seconds of application. ”

“ Visible during application, invisible after light-curing. ”

“ Wets the tooth just like water. ”

“ Perfect margins. ”

“ No patient discomfort. ”

Premium bonding with G-Premio BOND

Premium performance in any clinical setting

- An easy and forgiving application procedure with **minimal opportunity for handling errors**
- **Immediate chemical bonding**, so even a shortened application time will deliver high bond strengths **without needing to rub** the surface.
- The drying step is **highly reproducible**: 5 seconds, MAXIMUM air pressure
- A higher content of photo-initiator gives **more efficient light-curing**
- The fast, 25 sec self-etch application and chemical adhesion is **perfect for paediatric bonding or clinical cases where moisture control is challenging**
- Its yellow colour prior to light-curing gives **visual control of application**
- **Stable formulation** with a 2-year shelf life and **no refrigeration required**



Yellow on application



Invisible after light-curing

Dr S. Köken, Turkey

Premium adhesive bond strengths

- **Exceptional bond strengths** to enamel and dentine, regardless of the etching mode
- **4-MET, MDP and MDTP** universalise its bonding capabilities, providing strong adhesion to: GIC, metals (including precious), composites, zirconia and alumina
- Combines with Ceramic Primer II for **optimum adhesion** to glass ceramics



4-MET

MDP

MDTP

Premium comfort for your patients

- Applies like no other bond, with **exceptional wetting characteristics**
- Has an **innate ability to penetrate** and form an immediate chemical bond
- **Eliminates patient discomfort**
- Treatment option for **cervical hypersensitivity**



Premium margin aesthetics

- Forms an ultra-thin, **hydrophobic bond layer** to deliver invisible margins
- All water is removed from the bond layer during air drying, to ensure bond durability and a **very low 3µm film thickness**.
- Smart filler technology produces a **high filler density** in a fluid consistency bond
- Enhanced photo-initiators ensure a **stronger bond layer** after light-curing
- **HEMA-free**



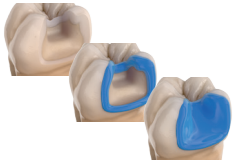
Premium value

- Unique silicon bottle gives **total control** over dispensing
- A thin nozzle design minimises material wastage and guarantees **up to 300 applications per 5ml bottle**



G-Premio BOND direct bonding technique

A simple application technique with immediate adhesion and high bond strengths provides an ideal platform for clinical success in direct bonding procedures.



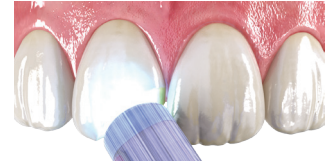
1. Select preferred technique. Etch for 10-15s, rinse & dry.



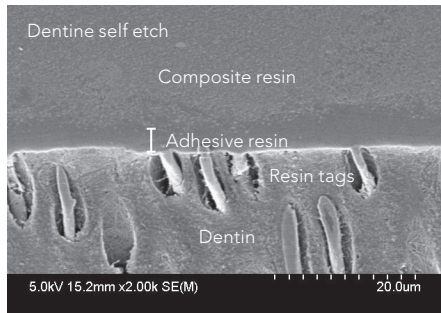
2. Apply **G-Premio BOND** and wait for 10sec.



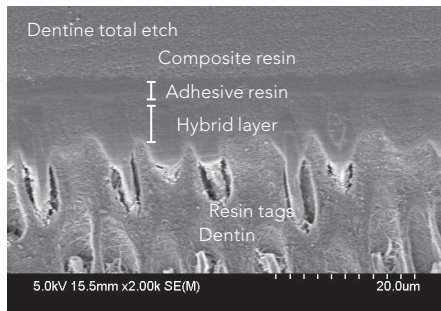
3. Dry for 5sec at **MAX** air pressure.



4. Light-cure for 10sec.



In self-etch mode, G-Premio BOND forms a 500nm-deep nano interaction zone (NIZ)

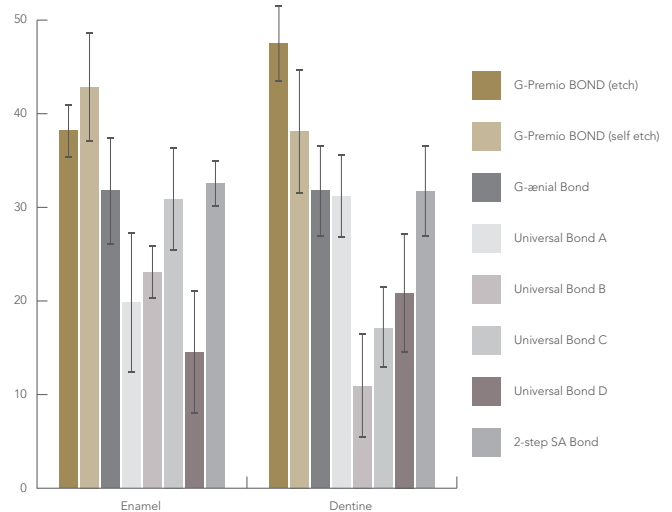


In total etch mode, a uniform hybrid layer is formed.

For best results, dry moderately using an air syringe.

Do not over-dry as this could collapse the collagen fibres.
Do not use a wet bonding technique.

Shear bond strength (MPa) to enamel and dentine in self-etch mode, after thermocycling (20,000 cycles)



Source: GCC R&D

G-Premio BOND repair application technique

G-Premio BOND enables excellent adhesion to all substrates after thermocycling, recognising that the use of a separate primer (Ceramic Primer II) together with G-Premio BOND is essential on glass ceramics to ensure durable adhesion.



1. Roughen the surface; Rinse and dry.



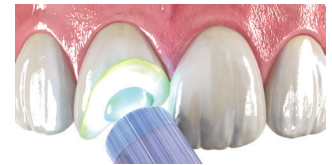
2. If there is a glass ceramic surface, apply **Ceramic Primer II** and dry.



3. Apply **G-Premio BOND** to all surfaces to be repaired and leave for 10sec.



4. Dry for 5sec at **MAX** air pressure.



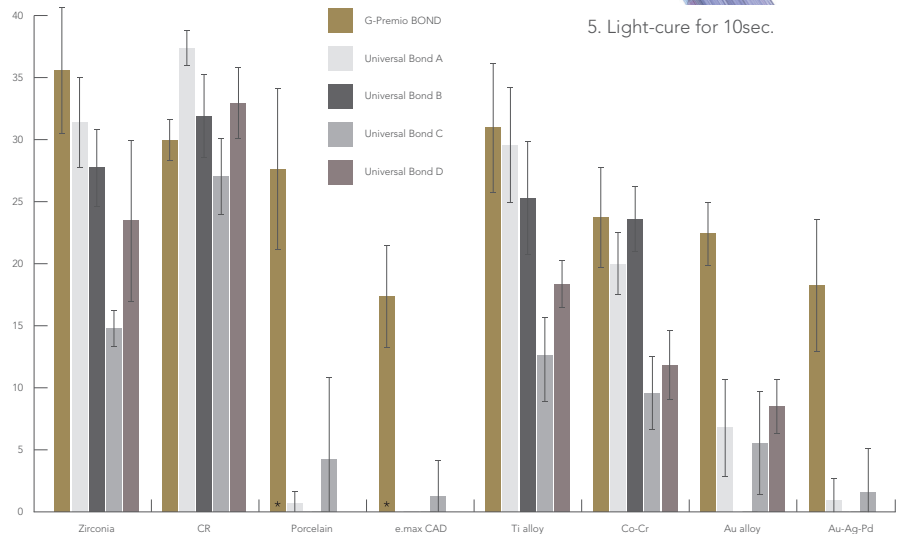
5. Light-cure for 10sec.

CERAMIC PRIMER II
PRIMER FOR CERAMIC AND COMPOSITE BONDING
3mL
FLAMMABLE
GC CORPORATION
TOKYO, JAPAN

For all ceramics (glass ceramics, zirconia and alumina), hybrid ceramics and composites

CERAMIC PRIMER II features GC's advanced silane and proven phosphoric acid ester monomer technologies in an innovative single bottle delivery, formulated for stability and durable adhesion. It has a 2-year shelf life and does not require refrigeration.

Shear bond strength (MPa) to polished indirect substrates after thermocycling (5,000 cycles)



Source: GCC R&D; * Used in combination with Ceramic Primer II

G-Premio BOND Refill

5mL liquid (1)



G-Premio BOND 3-bottle Pack

5mL liquid (3)



G-Premio BOND Unit Dose

0.1 mL liquid (50)
disposable applicator, fine (50)



GC Australasia Dental Pty Ltd
1753 Botany Road, Banksmeadow
NSW 2019, Australia

T: +61 2 9316 4499
F: +61 2 9316 4196
www.gcaustralasia.com